

Povidone 20 mg/ml

Preservative free and phosphate free in COMOD

WET-COMOD eye drops

In case of tiredness, burning and/or sensation of dryness of the eyes,
especially caused e.g. by intensive computer activity or by longer television consumption

Sterile eye drops without preservatives.

What is WET-COMOD?

WET-COMOD are preservative free and phosphate free eye drops for the moistening of the ocular surface containing 2% povidone, an especially well tolerated substance which increases the viscosity of the solution.

Composition:

1 ml of WET-COMOD contains

Active ingredient: Povidone 20 mg

Other ingredients: Sorbitol, citric acid anhydrous, sodium citrate and water for injections

What is WET-COMOD used for?

WET-COMOD is used for symptomatic treatment of tiredness, burning and/or sensation of dryness of the eyes especially caused e.g. by intensive computer activity or by longer television consumption.

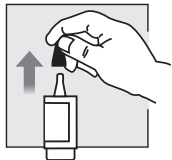
When should WET-COMOD be used?

At intensive computer activity or longer television consumption eyes tire faster than normal, because the blinking rate is lower if you are watching something in a concentrated manner. Due to the longer periods in which the eyes are opened, the tear film is not spread over the eye often enough, but this is necessary to keep the eye tissue wet and fully functional in consequence. Therefore the natural tear film breaks up more frequently in case of concentrated watching, e.g. in front of the computer or the TV. Consequently, eyes feel dry, itching and burning or you have the impression to have sand in the eyes.

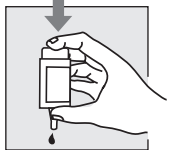
WET-COMOD forms a smooth, stable, lubricating film on the ocular surface and by this physical effect protects against dryness sensation, tiredness and irritations of the eyes. Therewith these symptoms are relieved immediately. This convenient effect sustains due to the increased viscosity of the eye drops. Nevertheless, WET-COMOD spreads well and fastly on the ocular surface and doesn't impair vision. WET-COMOD can be used while wearing hard or soft contact lenses and improves their wearing comfort.

Because WET-COMOD is preservative-free, it is very well tolerated, even in long-term treatment.

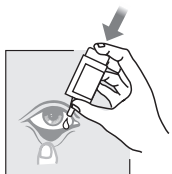
How should WET-COMOD be applied?



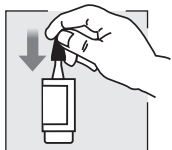
Remove cap before use.



Before the first application please turn the WET-COMOD bottle with its tip down and press onto the bottom of the bottle until the first drop appears at the nozzle. Now the bottle is ready for further use. Hold the bottle upside down and apply a strong and quick pressure on the bottom of the bottle. This activates the mechanism for the release of one drop. Because of the special COMOD® valve system, size and speed of each drop are the same however much pressure is applied.



Lean your head back slightly, pull down your lower eyelid and instil one drop into the lower eye. Slowly close your eye to allow the fluid to spread evenly on the eye surface.



Replace cap immediately after using. Please take care that the dropper tip is dry. When applying the fluid please avoid any contact between the tip of the bottle and your eye or your skin.

The COMOD® system releases 10 ml of solution which is the equivalent of approximately 300 drops. For technical reasons a small amount remains in the bottle at the end of exhaustion.

WET-COMOD can be used for an unlimited period of time.

Only one person should be treated with one particular bottle WET-COMOD.

Posology and administration

Generally you instil one drop of WET-COMOD 4-5 times a day into the conjunctival sac of each eye. If necessary, it can also be used more frequently. If you use WET-COMOD more frequently (e.g. more than 10 times per day), please consult your ophthalmologist.

WET-COMOD is suitable for long-term treatment.

Contraindications

WET-COMOD should not be applied if you are hypersensitive against one of the ingredients.

We recommend the use of WET-COMOD for the moistening of the ocular surface within the scope of eye surgeries only under the surveillance by an ophthalmologist.

Interactions with other medicaments

WET-COMOD should not be used immediately after or before the application of other medicinal products for the eye, but a period of at least 30 minutes should be kept between the applications. Eye ointments should always be applied after using WET-COMOD.

Because it is preservative-free WET-COMOD is well tolerated even when used over a longer period of time. In very rare cases hypersensitive reactions like burning or excessive tearing have been reported which stopped immediately when the use of WET-COMOD was discontinued.

Pregnancy and lactation

According to existing knowledge WET-COMOD can be used in children, pregnant and breast-feeding women.

Driving and using machines

In very rare cases immediately after instillation WET-COMOD eye drops may cause a transient blurring of vision even while proper use at normal dosage. Since this can increase reaction time while driving or operating machinery, it is recommended to start driving and operating machines after instillation only when visual clarity is restored.

How often and for how long can you use WET-COMOD?

WET-COMOD should be used according your personal feeling or to the instructions given by your doctor or your contact lens specialist.

Undesirable effects

Since the preparation contains no preservative, it is well tolerated even when used over a long period of time. In very rare cases hypersensitive or allergic reactions like burning, tearing, temporary blurred vision, foreign body sensation, itching, oedema, pain, inflammation, irritation, eyelid or face swelling have been reported, which disappeared immediately when the use of the preparation was discontinued.

Warning: If irritation persists or increases, discontinue the use and consult the physician.

Overdose

Overdose or intoxication is not to be expected if the preparation is used properly. No medical intervention is needed in case of a local ophthalmological overdose. There are no data available concerning the treatment of an accidental oral intake of the preparation.

Incompatibilities

To avoid incompatibility reactions that are possible due to interactions between contact lens care products and WET-COMOD, we recommend to wait for about 30 minutes with the application of the eye drops after inserting contact lenses.

What you need to know about storing WET-COMOD?

Store in a cool and dry place.

Shelf life as packaged for sale: 3 years

With proper care WET-COMOD can be used for 12 weeks after opening.

Do not use WET-COMOD after the expiry date on the carton and the bottle.

Keep WET-COMOD out of the reach and sight of children!

Nature and contents of the container:

10 ml of eye drops solution are filled in a multidose plastic container with airless pump and closed with a cap.

Date of information: October 2018

Imported and Marketing in India by

URSAPHARM INDIA Pvt Ltd

PLOT NO A-1, FIEE, BASEMENT, OKHLA INDL. AREA PHASE II

NEW DELHI-110020

Import License no.:

IL/FF-000279 (FF-421)

Manufactured by:

URSAPHARM Arzneimittel GmbH

Industriestraße, 66129 Saarbrücken, Germany

Tel.: +49 (6805) / 92 92 -0

Fax: +49 (6805) / 92 92-88

Email: info@ursapharm.de, www.ursapharm.de

